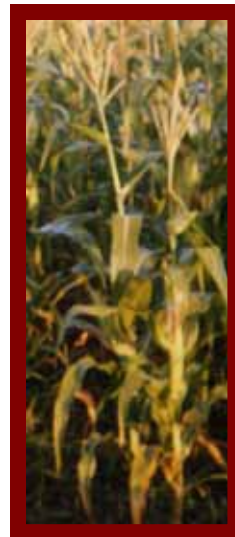


# Blantyre North Relief Project



Sindima Memorial  
Institute of  
Arts &  
Technology



Blantyre North Relief Project (BNRP), formerly Chisomo, is a family nonprofit organization with a Tax Exempt status (Section CPC 421 in Malawi) supporting orphans. Started in 1985 by supporting five orphans, BNRP now serves 700 orphans and the elderly (mostly grandmothers taking care of their orphaned grandchildren). BNRP provides food, clothing, blankets, school materials, uniforms, fees for secondary education, and skills training. BNRP operates 35 miles north of the commercial city of Blantyre, Malawi.

BNRP is the only organization in Malawi that builds homes for orphans without or with very poor housing. Homes for orphans are built in their own villages so that they can grow among their own relatives.



BNRP has built 11 houses in the past two years. It is the philosophy of BNRP not to institutionalize orphans.

BNRP is not able to give the orphans all the basic needs due to lack of funding. BNRP is funded mainly by Harvey and Gertrude Sindima who last year (2006) gave BNRP \$91,180 and Catherine Sindima who donated \$5,633. BNRP also received \$45,000 in donations from individuals. In addition, BNRP received \$26,000 from the Daniel C. Benton Philanthropy in Katonah, New York Colgate University students donated \$6,000. Churches of different denominations donated \$10,000 to BNRP. This money was used to run the

activities including fees for secondary school, uniforms, and building 3 houses for orphans. The priority for BNRP is food. It costs \$20.00 for an orphan to have a meal each day for a month.

Donations to BNRP go directly to their designated projects because BNRP has no overhead except transportation for food and other needs to the orphans. All activities of BNRP are by volunteers. BNRP manager, Rebecca Chimphepo and Operations officer, Andrew Michembo, work with local village heads and committees that oversee the welfare of orphans in each village.

The Sindima Memorial Institute of Arts & Technology is a 2,500 student-body academic center for orphans currently under construction 35 miles north of Blantyre, Malawi. The number of orphans in southern African countries is estimated to reach 12 million by 2010. Up to 30% of the orphans admitted to Sindima Memorial Institute will be from the region. A minimum of 40% of the student body will be female. 40% of students from southern African countries will also be female.

Irrigation Farm: Three years ago BNRP acquired 100 acres to develop an irrigation farm to feed orphans in its operating area and beyond. The farm has three harvests a year: March, June, and October. However, due to lack of sufficient financial resources all the work is labor intensive and the farm has not developed very much yet. The farm needs to be mechanized to produce enough food to feed the orphans and the elderly beyond those served by BNRP. The farm will also feed students at Sindima Memorial Institute when it opens. The farm will be a demonstration farm for students in agricultural biotechnology and food processing engineering programs at the Institute.



**Sindima Memorial Institute of Arts and Technology:** This will be a private comprehensive academic institution offering orphans secondary education, baccalaureate degrees, masters, and doctoral programs.



Mission: Sindima Memorial Institute's objective will be to prepare orphans to become highly trained and skilled professionals who will respond to the health and economic needs, and the development of Malawi and Africa.

The Institute will have 6 academic divisions: secondary education, the divisions of: arts and humanities, commerce, communication, science and technology, and allied health sciences. The flagship division of the Institute will be the allied health professional programs which alone will offer 25 degrees including 6 masters degrees and 5 doctorates in medicine, pharmacy, dental, optometry, and nursing education and science.

On June 15, 2005 the Malawi Secretary of Education approved and granted permission to build the university. The Secretary wrote a letter of recognition of the Sindima Memorial Institute as an institution of higher learning on August 24, 2005.

Governance: The Institute will be governed by a five-member board. The chief academic officer of the medical university will be the principal, a medical doctor with years of teaching and administrative experience.

The Situation: The health situation in Malawi is dire and is compounded by HIV/AIDS and poverty. Life expectancy has declined from 40.2 years (1998) to 37.5 years in 2002 mainly due to the HIV/AIDS

epidemic which has stabilized at 14% in 2007. Today one million people of ages 19–49 live with HIV/AIDS and 8 people die every hour, every day. Infant mortality rate is 92 live births per 1,000 (2007 estimates). The maternal mortality rate is 980 per 100,000 live births.

Malawi does not have enough healthcare providers. In 2006 the Minister of Health reported that there were only 3,000 nurses for a population of 12 million. The Physical Therapists Association of Malawi reported having only 25 therapists in 2005. The present doctor-to-population ratio stands at 1:88,000 (World Bank). In 2005 there were 72 medical specialists of whom 23 were Malawian nationals and 49 were non-Malawians.

Malawi has universal primary education, but by fifth grade nearly half of all school children drop out for lack of school materials, clothing, food, and parental support due deaths from HIV/AIDS. Secondary education is for non-poor children. Even then, less than half pass the Malawi School Certificate of Education (MSCE) because of poor preparation because of the lack of books and school materials. In 2006, 78,506 candidates sat for the MSCE, 30,319, representing a 38.62% pass rate. Only 867 or 2.86% of those who passed were selected to the 5 constituent colleges of the University of Malawi. Sindima Memorial Institute will enroll orphans in its specialized science and technology secondary education to prepare them for the rigorous baccalaureate-Masters-doctorate programs.

Connectivity: To bridge the digital divide, Sindima Memorial Institute will have its own communication system: a Very Small Aperture Terminal (VSAT) antenna with 6 dedicated servers. The Institute (except the administration) will be on a Wireless Local Access Network (WLAN) with students using laptops. Each classroom and laboratory will have telephone lines (twisted pair), TV distribution (coax RG-6) and Ethernet data connections (category 6). The four lecture halls will have multi-coax conduit to connect video/date projector, the booth, and campus TV.



Construction: A mile long road construction and earth works started in 2005. The first building, a 2,400 sq. ft. warehouse was completed 2006 [photo]. Under construction now is a 23,3734 sq. ft. four-story building that will house: administrative offices, a faculty lounge (ground floor), 62 classrooms, 10 large dedicated wet and dry laboratories, 4 computer labs, 7 lectures halls of various sizes, and a library. Still to be built are two residential halls (with a full gym in the basement in one of the halls) for the first 850 students, and faculty town houses. The second phase of construction will be the medical center, the library, technology/communication building, the chapel, and two more residential halls.

Funding: We are building "Pay-As-You-Go" because we have very limited financial resources. We have most of the building materials—bricks, quarry stone—all on location and sand is nearby. We also have all the construction equipment—a concrete mixer, a compaction machine, etc. To further minimize construction cost, we hired our own construction workers. We have thus far spent more than \$650,000 in cement and reinforcement steel, bringing the total construction expenditure to date to \$1.2m. To complete construction of this phase of construction it will cost:

- \$3m for steel, cement, windows, doors, equipment, and furnishings of the four-story academic building.
- \$100,000 Farm Tractor and Equipment
- \$1.5m Science Equipment
- \$2.5m Two Residential Halls
- \$1m Faculty Housing
- \$2.5m Medical Center
- \$1m Medical Equipment
- \$1m Solar Energy



Beneficiaries: Thousands of people will benefit from the Institute: the orphans themselves, the 350 employees who will spur the local economy (grocery stores, shops, vendors, and farmers), the 12 surrounding villages that will benefit from the technology transfer, and 50,000 people who will be served by the only hospital in a 25-mile radius and the only hospital with specialty physicians in a 45-mile area. Malawi will benefit from the Institute since it will be the only medical university in the nation, and the only university to offer doctorates in Malawi.



The number of orphans in southern African countries is estimated to reach 12 million by 2010. Up to 30% of the orphans admitted to Sindima Memorial Institute will be from the region. A minimum of 40% of the student body will be female.

Since the Sindima Memorial Institute will be a teaching institution as well as a center for research and scholarship, the academy will benefit from the Institutes contribution to knowledge in various academic journals in the world.

BNRP has not stopped supporting the many orphans basic and educational needs while we are building the Institute. Please make a donation to help us provide the orphans food, clothing, blankets, shelter, school materials, and fees. Support our efforts to make a difference in the lives of orphans. Send your donation to the project you want to support and we will respect your choice. Please use the form to designate your donation and to receive updates about BNRP activities or the construction of Sindima Memorial Institute. Examples of sponsorship opportunities include donations of: \$20.00 a month for food for one orphan, \$50 a month to become a friend of BNRP or become a partner of BNRP, Sindima Memorial Institute with \$500 a month donation.

Your help will be greatly appreciated by our family and generations of orphans in Malawi. Leave a legacy; inspire generations. Support and inspire an orphan!

Donations to BNRP go directly to their designated projects because BNRP has no overhead except transportation for food and other needs to the orphans. All activities of BNRP are by volunteers. BNRP manager, Rebecca Chimphepo and Operations officer, Andrew Michembo, work with local village heads and committees that oversee the welfare of orphans in each village.

Giving opportunities: One time gift, monthly, pledge, "In Honor of" and "In Memory of" someone, bequests, building a house (\$4,500). For more information about gifts in kind, "In Honor of", "In Memory of", bequests send inquiries: [hsindima@twcny.rr.com](mailto:hsindima@twcny.rr.com)

How to give: by mail, direct transfer, online

Enclosed is a donation to (circle one)  
BNRP or Sindima Memorial Institute \$ \_\_\_\_\_

The donation is for \_\_\_\_\_

Name \_\_\_\_\_

Organization \_\_\_\_\_

City \_\_\_\_\_

State \_\_\_\_\_ Zip \_\_\_\_\_

Phone \_\_\_\_\_

Email \_\_\_\_\_

\_\_\_\_ Yes, I would like to receive an update on BNRP, Sindima Memorial Institute.

\_\_\_\_ Please do not list my name in BNRP annual publications.

Mail your donation to:

BNRP/Sindima Memorial Institute  
P. O. Box 297  
Hamilton NY 13346

For details on direct wire transfer to Malawi contact: [rmichembo@yahoo.com](mailto:rmichembo@yahoo.com)

All other inquires: [hsindima@twcny.rr.com](mailto:hsindima@twcny.rr.com)

Visit us on the Web at [www.BNRP.org](http://www.BNRP.org)